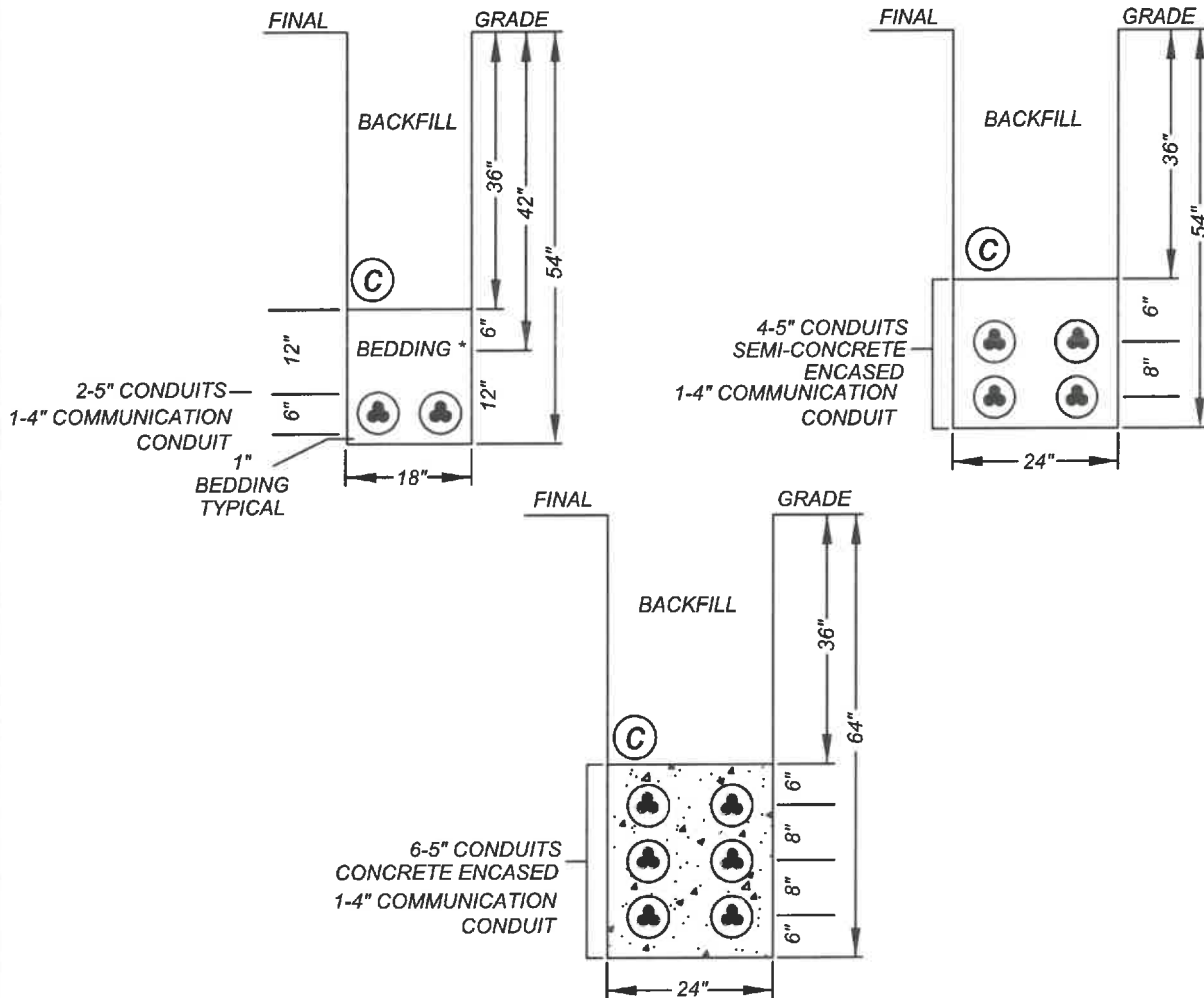


MORENO VALLEY STANDARD No MVEU-724B-1

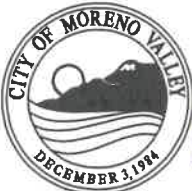
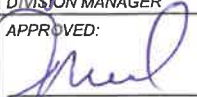
**ELECTRIC TRENCH DETAILS FOR
CONDUIT INSTALLATIONS**



NOTES:

- 1.) BEDDING MATERIAL SHALL BE CLEAN SAND OR PEA GRAVEL. OTHERWISE, NATIVE MATERIALS MAY BE USED PROVIDED THEY MEET PUBLIC WORKS CONSTRUCTION (GREEN BOOK) STANDARDS PER SUBSECTION 306.1.2.1 AND MUST HAVE A SAND EQUIVALENT OF NOT LESS THAN 30 OR HAVING A COEFFICIENT OF PERMEABILITY GREATER THAN 1.4 INCHES/HR.
- 2.) CONDUITS ARE DB, EB, OR SCH 40 DEPENDING ON APPLICATION PER PLAN.
- 3.) FOR CONDUIT INSTALLATION IN A BORE, SEE STD PLANS MVEU-727A & MVEU-727B.
- 4.) FOR CONDUIT INSTALLATION IN EXISTING ROADWAYS, SEE STD PLANS MVSU-132A, MVSU-132B, & MVSU-132C.
- 5.) CONCRETE SHALL BE TWO SACK ENCASEMENT.
- 6.) ORANGE INSULATED COPPER CLAD STEEL TRACER WIRE PER KRISTECH SPECIFICATIONS SHEET, OR EQUAL. TRACER WIRE TO BE INSTALLED 2" ABOVE COMMUNICATION CONDUIT PER "THE COMPLETE UTILITY LOCATING SYSTEM SPECIFICATIONS FOR TELECOMMUNICATIONS" BY COPPERHEAD INDUSTRIES, OR EQUIVALENT.

NOT TO SCALE

	RECOMMENDED:  DIVISION MANAGER DATE: 1-20-22	CITY OF MORENO VALLEY FINANCIAL & MANAGEMENT SERVICES DEPARTMENT - ELECTRIC UTILITY DIVISION
	APPROVED:  PUBLIC WORKS DIRECTOR / CITY ENGINEER DATE: 2/4/22	ELECTRIC TRENCH DETAILS FOR CONDUIT INSTALLATIONS