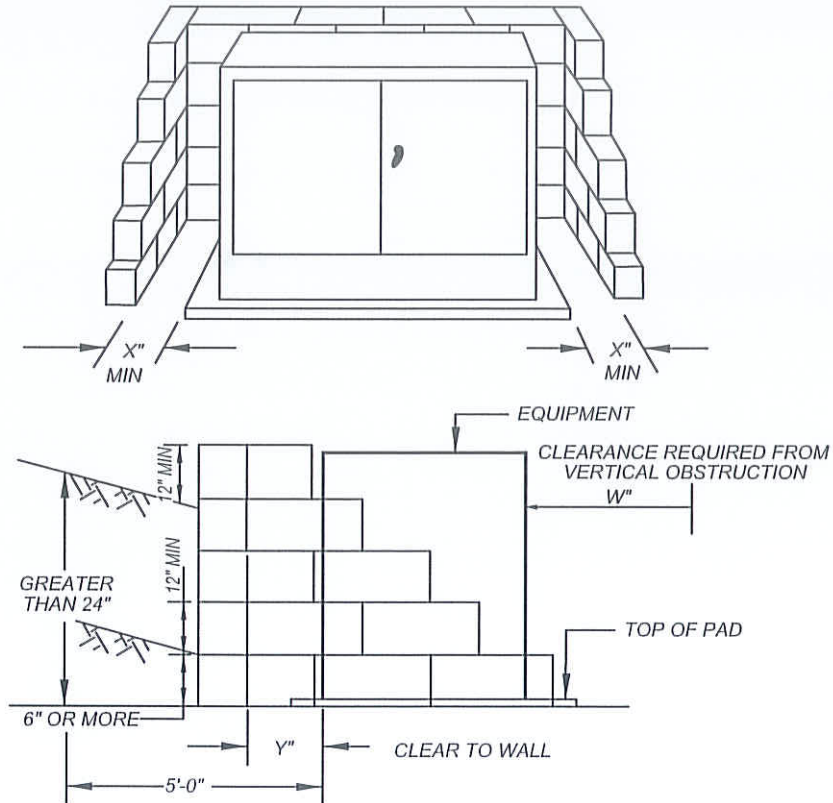


MORENO VALLEY STANDARD NO. MVEU-723-0

**RETAINING WALLS FOR
PAD MOUNTED SWITCHES & TRANSFORMERS**



| EQUIPMENT TYPE MINIMUM CLEARANCES | "W" | "X" | "Y" |
|---|-----|-----|-----|
| TRANSFORMERS FRONT DOOR WORKING CLEARANCE | 72" | --- | --- |
| TRANSFORMERS SIDE(S) CLEARANCE | --- | 18" | --- |
| TRANSFORMERS REAR CLEARANCE | --- | --- | 12" |
| SWITCHGEAR FRONT DOOR WORKING CLEARANCE | 72" | --- | --- |
| SWITCHGEAR REAR DOORS WORKING CLEARANCE | --- | --- | 72" |
| SWITCHGEAR SIDE(S) WORKING CLEARANCE | --- | 60" | --- |

NOTES:

1. RETAINING WALLS ARE REQUIRED WHERE A SLOPING GRADE RISES 24" OR MORE AT A HORIZONTAL DISTANCE OF 5' OR LESS FROM THE EDGE OF PAD OR ENCLOSURE.
2. RETAINING WALLS ARE ALSO REQUIRED WHENEVER THE GRADE RISES 6" ABOVE THE TOP OF PAD (SEE DRAWING DETAILS).
3. RETAINING WALLS MUST BE APPROVED BY BUILDING DEPARTMENT AND REQUIRES A SEPARATE PERMIT(S) . SEE STANDARD MVGF-650A-0 AND MVGF-650B-0.

NOT TO SCALE

| | | | |
|---|--|---|--|
|  | RECOMMENDED: <i>[Signature]</i> 1-15-14 DIVISION MANAGER DATE | CITY OF MORENO VALLEY PUBLIC WORKS DEPARTMENT - ELECTRIC UTILITY DIVISION | |
| | APPROVED: <i>[Signature]</i> 1/29/14 PUBLIC WORKS DIRECTOR / DATE CITY ENGINEER | RETAINING WALLS FOR PAD-MOUNTED SWITCHES & TRANSFORMERS | |