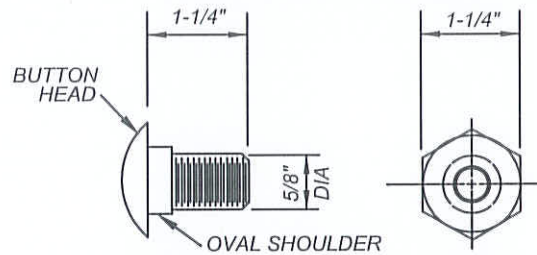
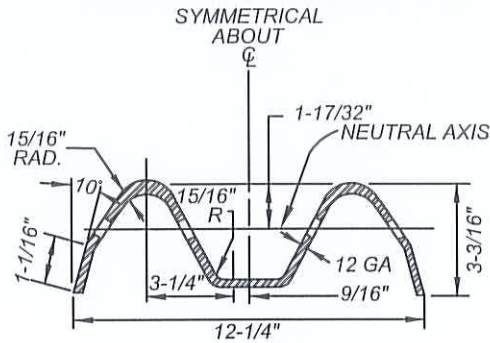


**INSTALLATION**

NOTE: GUARD RAILING FLARES AT BRIDGE APPROACHES SHALL HAVE A MINIMUM RADIUS OF 150'.

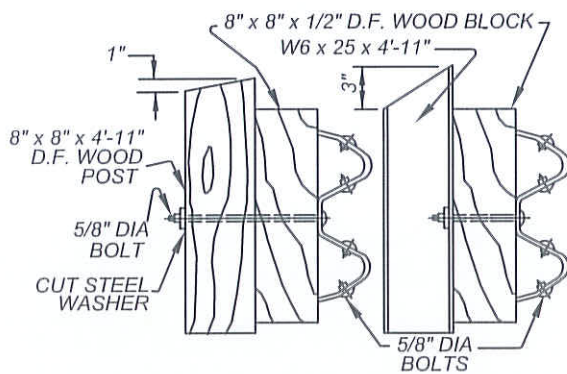
**TERMINAL SECTION**



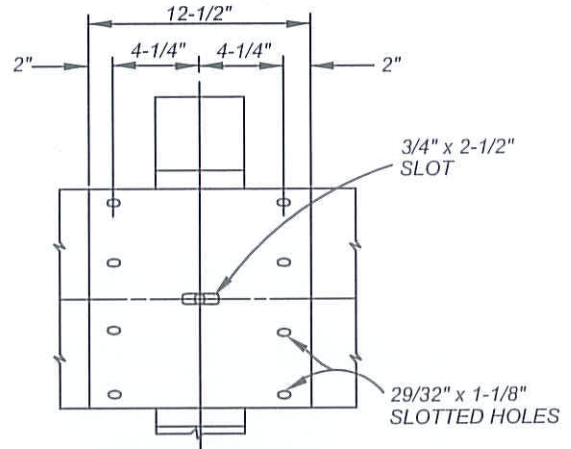
**SPLICE BOLT AND NUT**

POST BOLT: SIMILAR EXCEPT LENGTH

**SECTION THROUGH RAIL ELEMENT**

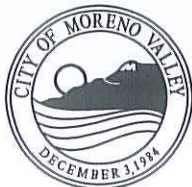


**ARRANGEMENT OF POSTS**



**RAIL SPLICE**

NOT TO SCALE



RECOMMENDED:  
*EL* 1/22/14  
 DIVISION MANAGER DATE  
 APPROVED:  
*[Signature]* 1/29/14  
 PUBLIC WORKS DIRECTOR DATE  
 CITY ENGINEER

**CITY OF MORENO VALLEY**  
 PUBLIC WORKS DEPARTMENT - TRANSPORTATION ENGINEERING DIVISION

**END OF ROAD TREATMENT DETAILS**

STANDARD PLAN  
**MVLT-416B-0**  
 SHEET 2 OF 2