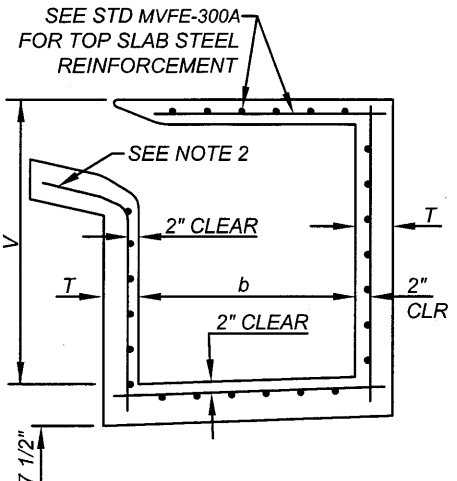


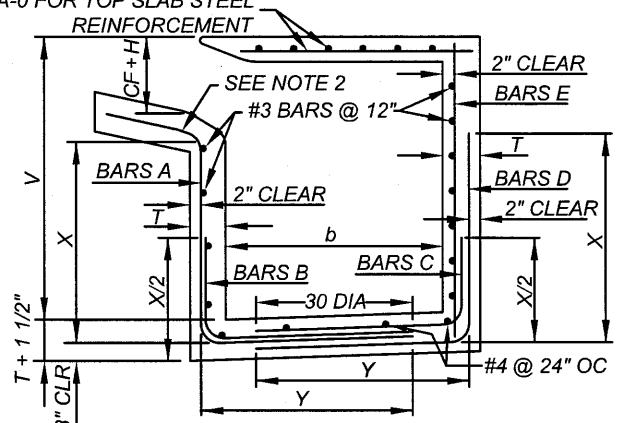
| WALL AND FLOOR STEEL |        |              |        |                  |          |   |
|----------------------|--------|--------------|--------|------------------|----------|---|
| W                    | V (ft) |              | T (in) | FRONT WALL STEEL |          | REAR, END WALLS, & FLOOR STEEL (EACH WAY) |
|                      | FROM   | TO (INCLUDE) |        | HORIZONTAL       | VERTICAL |   |
| TO 7'                |        | 4            | 6      | #3 @ 6"          | #3 @ 6"  | #3 @ 6"                                   |
| TO 7'                | 4      | 8            | 8      | #4 @ 12"         | #4 @ 12" | #4 @ 12"                                  |
| TO 7'                | 8      | 12           | 10     | #4 @ 10"         | #4 @ 10" | #4 @ 10"                                  |
| 14'                  |        | 4            | 6      | #3 @ 6"          | #3 @ 6"  | #3 @ 6"                                   |
| 14'                  | 4      | 8            | 8      | #4 @ 12"         | #4 @ 12" | #4 @ 12"                                  |
| 14'                  | 8      | 10           | 10     | #4 @ 8"          | #4 @ 12" | #4 @ 10"                                  |
| 14'                  | 10     | 12           | 10     | #4 @ 6"          | #4 @ 12" | #4 @ 10"                                  |



**REINFORCEMENT FOR CATCH BASIN WITH "W" TO 14' (INCLUDE)**

| WALL AND FLOOR STEEL            |              |        |   |                 |          |          |                       |
|---------------------------------|--------------|--------|---|-----------------|----------|----------|-----------------------|
| V (ft)                          |              | T (in) | FRONT WALL STEEL                          | REAR WALL STEEL |          |          | END WALL STEEL        |
| FROM                            | TO (INCLUDE) |        | BARS A & B                                | BARS C          | BARS D   | BARS E   | HORIZONTAL & VERTICAL |
|                                 | 4            | 6      | #3 @ 24"                                  | #3 @ 12"        | ---      | #4 @ 24" | #3 @ 18"              |
| 4                               | 5            | 8      | #3 @ 20"                                  | #3 @ 12"        | ---      | #4 @ 24" | #3 @ 14"              |
| 5                               | 6            | 8      | #3 @ 12"                                  | #3 @ 10 1/2"    | ---      | #4 @ 24" | #3 @ 14"              |
| 6                               | 7            | 8      | #4 @ 17"                                  | #3 @ 8 1/2"     | ---      | #4 @ 24" | #3 @ 14"              |
| 7                               | 8            | 8      | #4 @ 13"                                  | #3 @ 6 1/2"     | ---      | #4 @ 24" | #3 @ 14"              |
| 8                               | 9            | 10     | #4 @ 15"                                  | #3 @ 7 1/2"     | ---      | #4 @ 20" | #3 @ 11"              |
| 9                               | 10           | 10     | #4 @ 12"                                  | #4 @ 12"        | ---      | #4 @ 20" | #3 @ 11"              |
| 10                              | 11           | 10     | #5 @ 15"                                  | ---             | #4 @ 11" | #4 @ 18" | #3 @ 11"              |
| 11                              | 12           | 10     | #6 @ 18"                                  | ---             | #4 @ 9"  | #4 @ 13" | #3 @ 11"              |
| X = (V + T) - (CF + H + 4 1/2") |              |        | Y = ( $\frac{b + 2T}{2}$ ) + 15 DIA. - 2" |                 |          |          |                       |

SEE STD MVFE-300A-0 FOR TOP SLAB STEEL REINFORCEMENT

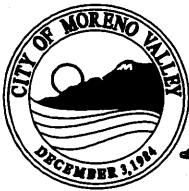




**NOTES:**

1. REINFORCING STEEL SHOWN HEREON SHALL BE USED FOR ALL CATCH BASIN REGARDLESS OF BASIN LENGTH "W" OF DEPTH "V".
2. VERTICAL BARS SHALL BE EXTENDED INTO LOCAL DEPRESSION AREA.
3. SEE STD MVFE-300A FOR REINFORCEMENT FOR TOP SLAB.

**REINFORCEMENT FOR CATCH BASIN WITH "W" GREATER THAN 14'**

NOT TO SCALE

|   |   |   |  |
|---|---|---|--|
|  | RECOMMENDED:<br><br>DIVISION MANAGER<br>DATE 1-6-17                    | <b>CITY OF MORENO VALLEY</b><br>PUBLIC WORKS DEPARTMENT - CAPITAL PROJECTS DIVISION |  |
|   | APPROVED:<br><br>PUBLIC WORKS DIRECTOR / CITY ENGINEER<br>DATE 1/20/17 | <b>CATCH BASIN REINFORCEMENT</b>  |  |