

CITY OF MORENO VALLEY FIRE DEPARTMENT MONTHLY REPORT

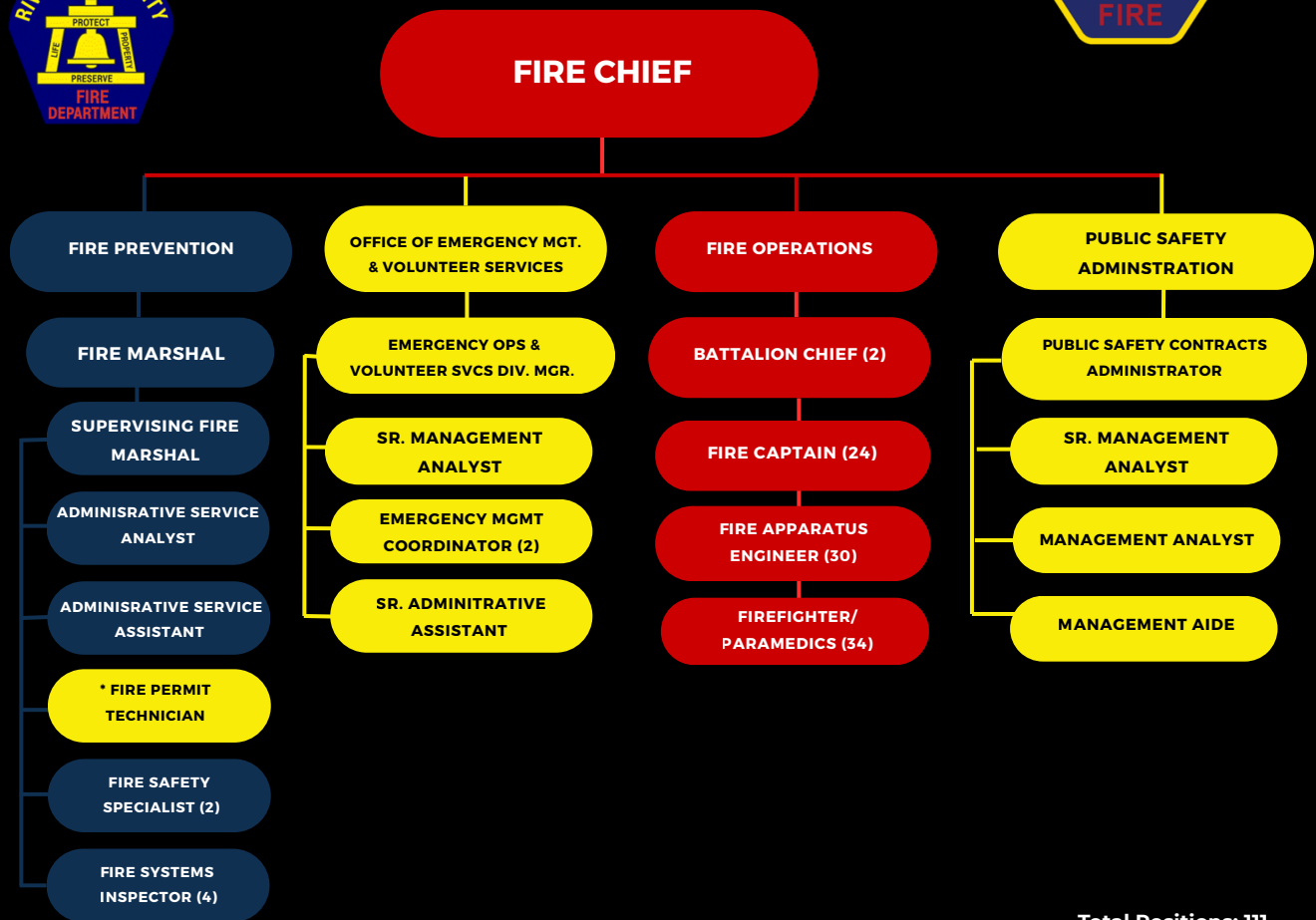
APRIL 2026



Submitted by
Jesse Park,
Fire Chief

CITY OF MORENO VALLEY FIRE DEPARTMENT

ORGANIZATION CHART



Total Positions: 111
 City Positions (Yellow): 10
 CALFIRE Positions (Red): 91
 Riverside County Positions (Blue): 10

*Employee supports Fire Department, but formally assigned to Building & Safety Division

FIRE OPERATIONS



7 STATIONS



7 ENGINES



1 TRUCK



3 SQUADS



POPULATION 217,000



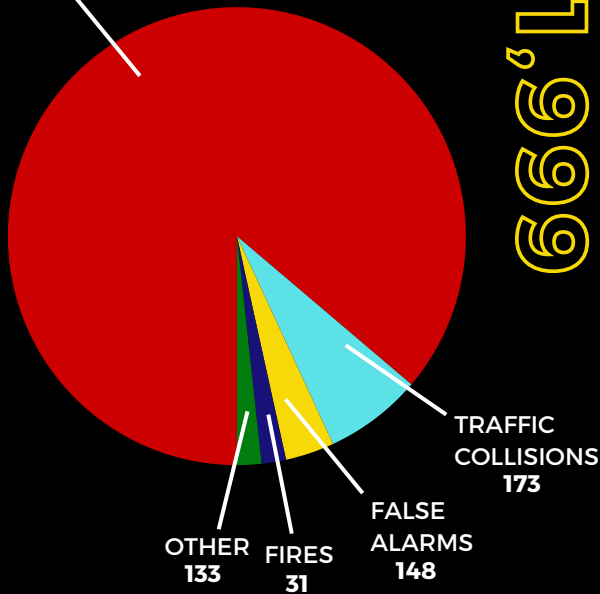
24,545 CALLS IN 2025

3-3X

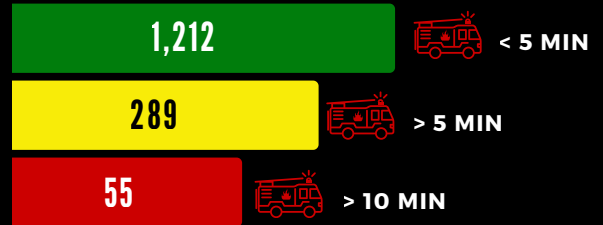
ISO RATING

TOTAL CALLS: APRIL 2026

MEDICAL EMERGENCIES
1,514



LIGHTS & SIRENS: SCENE TIMES



CODE 3 AVG RESPONSE
4.0 MIN



MET FIRST ALARM STANDARD



DID NOT MEET FIRST ALARM STANDARD

YTD CALLS

8,299

REGIONAL RESPONSES

BATTALION CHIEF CALLS



MV RESPONDING
OUTSIDE OUR CITY

325

AID RECEIVED
IN THE CITY *

191



*As part of the City's contract
with Riverside County Fire

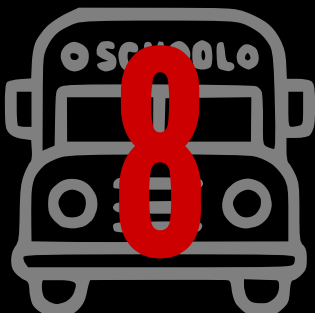
FIRE OPERATIONS

SUNNYMEAD	TOWNGATE	SUNNYMEAD RANCH	MORENO BEACH	KENNEDY PARK	COLLEGE PARK	MORRISON PARK
STATION 2	STATION 6	STATION 48	STATION 58	STATION 65	STATION 91	STATION 99
DISTRICT 1	DISTRICT 1	DISTRICT 2	DISTRICT 3	DISTRICT 4	DISTRICT 4	DISTRICT 3
TRUCK 2	ENGINE 6	ENGINE 48	ENGINE 58	ENGINE 65	ENGINE 91	ENGINE 99
ENGINE 2	SQUAD 6			SQUAD 65	SQUAD 91	

STATION RESPONSES

STATION 2	STATION 6	STATION 48	STATION 58	STATION 65	STATION 91	STATION 99
364	410	183	140	373	332	197
CALLS THIS MONTH						
15.17	17.08	7.63	5.83	15.54	13.83	8.21
AVG. TIME COMMITTED PER DAY						

PUBLIC ENGAGEMENT ACTIVITIES



Ex: Station Tours and Community Events

SIGNIFICANT INCIDENT

On Wednesday, April 15, 2026, at 9:33a.m., CAL FIRE/Riverside County Fire responded to a reported commercial structure fire at 14941 Riverside Drive, located in the unincorporated area of Battalion 9. Upon arrival, the first chief officer observed a large single-story commercial building with no visible fire. After gaining entry, crews located a single room where a small fire had been contained to a battery by an activated fire sprinkler. The sprinkler system and fire alarm activated as designed. While the fire damage was minimal, water discharge from the sprinkler system caused damage to several nearby offices. The incident resulted in an estimated \$20,000 in loss and \$2,000,000 in property saved. The cause of the fire has not been determined as of the writing of this report.

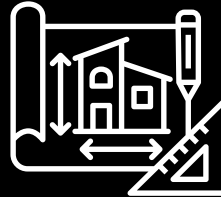
FIRE PREVENTION

P R E V E N T I O N | P L A N | I N S P E C T I O N S



**PERMITS
ISSUED**

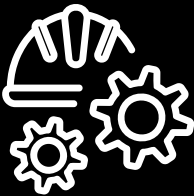
104



**PLAN
CHECKS**

312

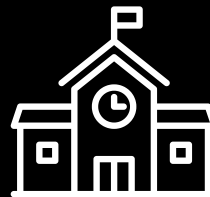
YTD 1,122



**NEW
CONSTRUCTION
INSPECTIONS**

205

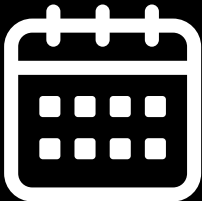
YTD 720



**STATE
MANDATED
INSPECTIONS**

139

YTD 403



**BUSINESS
ANNUAL
INSPECTIONS**

124

YTD 463



**TOTAL
INSPECTOR
HOURS**

673.27



**PUBLIC
INQUIRIES**

85

YTD 241



**SQ. FT.
INSPECTED**

1,408,724



**HAZARD
ABATEMENT
INSPECTIONS**

579

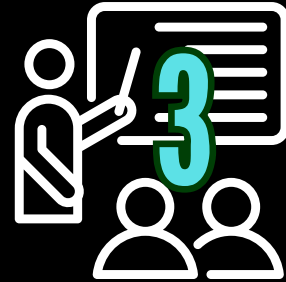
YTD 1,878

EMERGENCY MANAGEMENT

PREPAREDNESS | RESPONSE | VOLUNTEER SERVICES

TRAININGS / ENGAGEMENTS

- **1** City-wide Trainings
 - *CERT: April 17 - 19th*
- **1** Community Engagements
 - *Fire Suppression/Disaster Preparation for Sunnymead Ranch Association: April 7*
- **1** Business Engagements
 - *Springs Fire: April 3*



Trainings & Engagements

Hours City-wide Volunteers Worked



City-wide Volunteer Program

- **66** City-wide volunteers
- **9** volunteer programs
- **19** City-wide volunteer applications
- **221.20** hours City-wide volunteers worked

VOLUNTEER SERVICES

OEM Volunteer Program

- **14** OEM Volunteers
- **1** volunteer programs
- **6** OEM volunteer applications
- **112** hours OEM volunteers worked



Hours OEM Volunteers Worked

EMERGENCY OPERATIONS

EOC Status: **Steady State**

- **2** EOC-specific trainings
- **5** workshops



CITY OF MORENO VALLEY FIRE DEPARTMENT

HIGHLIGHT OF THE MONTH

On Friday, April 3, the Office of Emergency Management (OEM) began monitoring the Springs Fire and activated the Emergency Operations Center (EOC) to Management Watch as conditions worsened. Essential EOC staff—including Operations, Planning & Intelligence, Mass Care, Fire Branch, GIS, Documentation, Food, and Animal Services—responded promptly, providing coordinated support and regular updates to elected officials. Public Works assisted with road closures, while Moreno Valley Utility monitored potential power-related needs. Shelter operations at Valley View High School were supported by an OEM Shelter Manager, OEM volunteers, and City Animal Services coordinated closely with County partners, maintaining after-hours staffing and caring for 22 evacuated animals throughout the incident.

CONTACT INFORMATION

Administration | Operations | *Public Safety Building*
22850 Calle San Juan De Los Lagos, Moreno Valley, CA 92553
(951) 413-3870

Fire Prevention | *City Hall*
14177 Frederick Street, Moreno Valley, CA 92553
(951) 413-3370

Office of Emergency Management | *Emergency Operations Center*
22870 Calle San Juan de Los Lagos, Moreno Valley, CA 92553
(951) 413-3800

